



North Valleys Regional Park and Phase 5 improvements

Welcome to the North Valleys

- 160 acres open space.
- 80 acres maintained hardscape and landscape.
- 16 acres of sports fields.
- 15+ acres of maintained common area landscape.
- Water Splash Pad
- Large community center
- 2 Children's play areas.
- Skateboard Park
- 3+ miles of trail system
- 2 large picnic pavilions
- Volleyball Court

And much more..





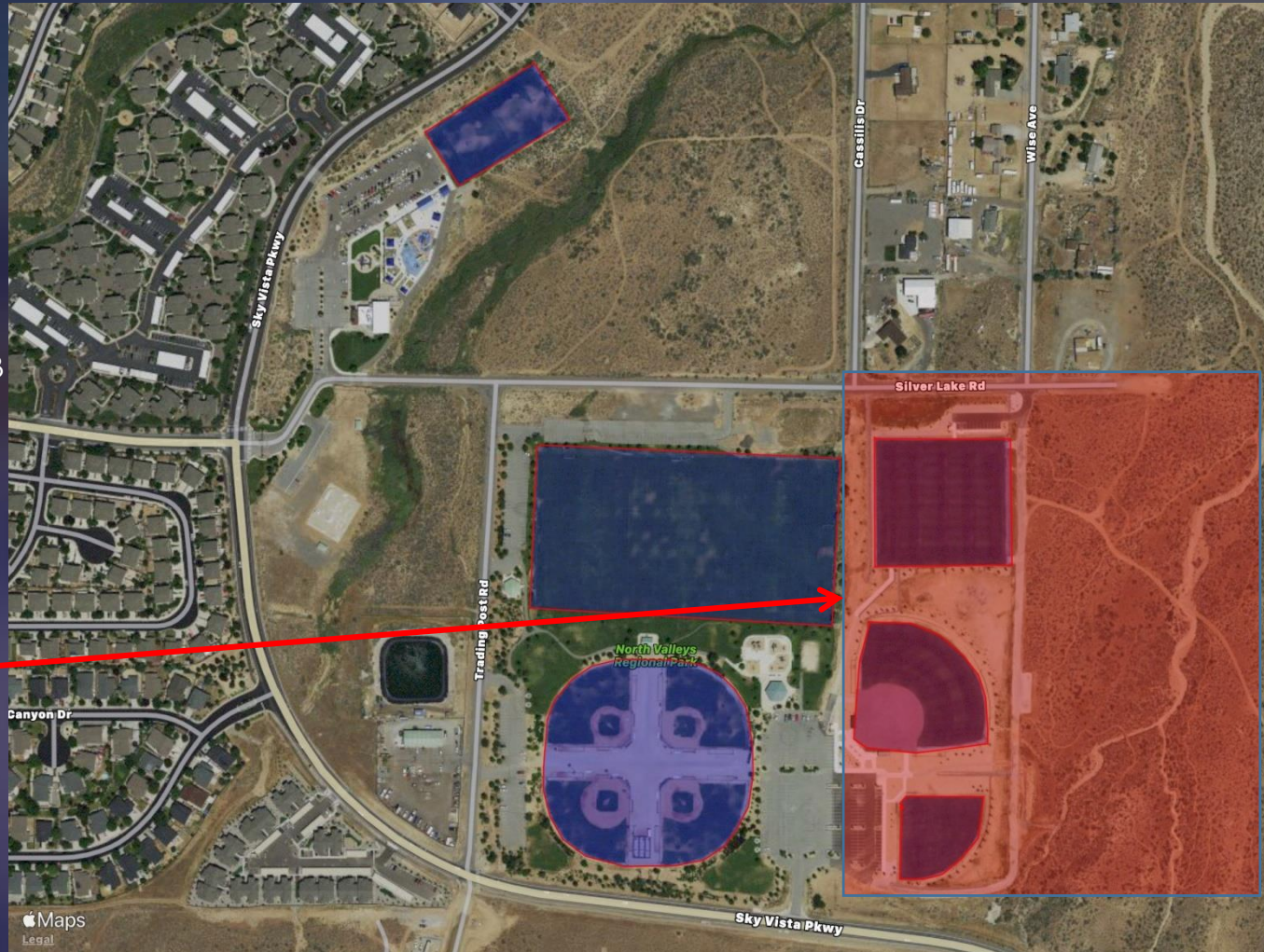
NVRP Sports Fields

Users groups include:

- Nevada Select
- Northern Nevada Soccer
- Reno Senior Coed
- El Sol De Nevada
- Nevada United
- AYSO
- Nevada Premier
- Silver State Cal Ripken
- Northern Nevada Adult BB

Washoe County/City of Reno 2017 NVSC Phase 5 Improvements:

- Multi use field
- Babe Ruth field
- Little league field
- Trail head installation
- Irrigation improvements



Field Maintenance overview:

- One full time staff member with two seasonal staff members.
- Fields mowed weekly, some areas bi-weekly.
- Playing surfaces aerated three times per season.
- Playing surfaces fertilized three times per season.
- Top-dressing and over seeding of areas performed as needed.
- Pest control performed as needed.
- Irrigation monitored and repaired daily.



NVRP Play Structures



Splash Pad Play Area

- Aviation themed to match the splash pad
- Focus on handicap users.

Maintenance Overview:

- Requires CPSI certified staff member for maintenance and equipment repairs.
- Daily inspections as well as written monthly safety inspections.
- Monthly cleaning and sanitation.

Sierra Picnic Pavilion Area

- Centrally located among sports field.
- Offers play opportunities for all age groups.





NVRP Water Splash Park



Splash Pad Features :

- Aviation themed splash pad.
- 20 different water features
- 60 spray heads
- Reservable pavilions
- Onsite concessions available

Best of Aquatics award winner 2015

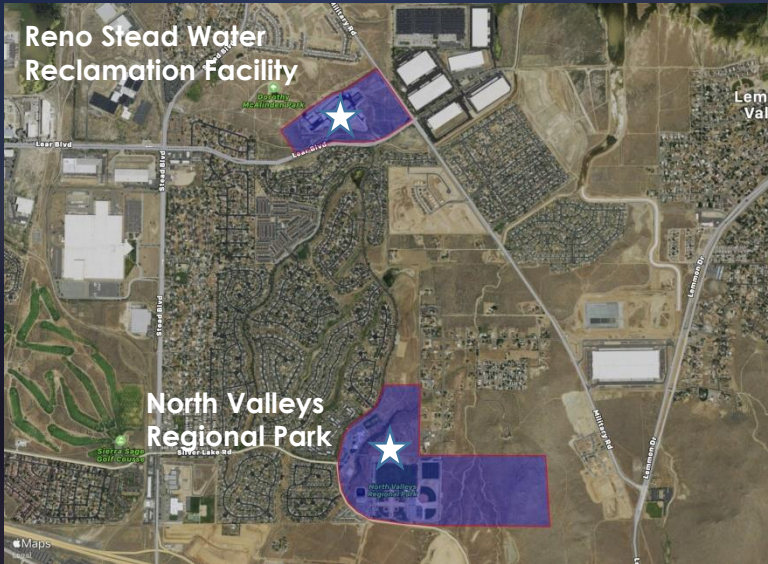


Maintenance Overview:

- Requires the daily inspection and cleaning of 11 filters.
- Daily monitoring of pump performance and chemical injection equipment.
- Requires hourly chemical level testing.
- 500lbs sand filter requires backwash 2-3 times weekly.
- Annual winterization and UV light breakdown and cleaning.



NVRP Irrigation System



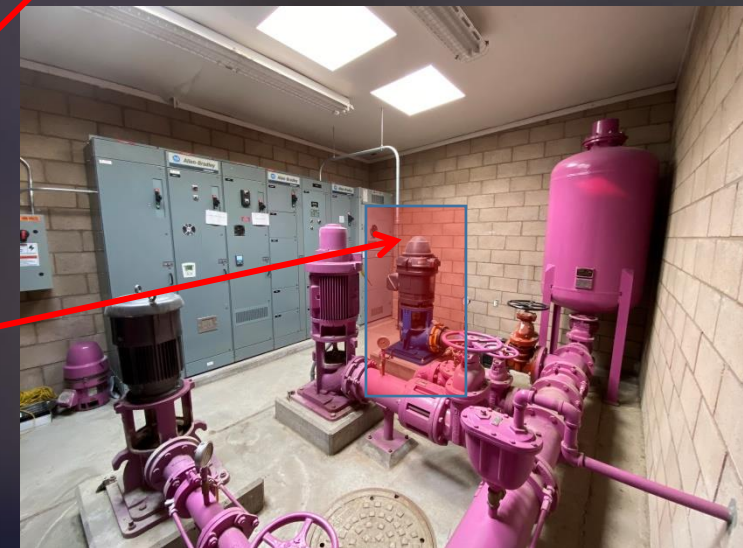
Irrigation System Specs and Maintenance:

- Effluent water supplied by the Reno-Stead water reclamation facility.
- Effluent water is delivered by pipeline and stored in the 1.5 million gallon holding pond at NVRP.
- Irrigation pump station consists on two 45HP vertical turbine pumps and a small 15HP maintenance pump.
- Station total output is 900 gals/min at 95psi.
- System utilizes Rainbird Maxi-com Central irrigation Control for field operations. Controller maintains system PSI and flow zone capacities while maximizing pump station efficiency.

- Requires daily shaft packing inspection and adjustment.
- Annual breakdown inspection and lubrication change.

Phase 5 Improvements:

- Addition of a new 45HP pump and a variable frequency drive unit.
- Addition of Amiad filtration system.





NVRP Trailheads



Community Center Paths

- Walking paths through open space areas and to park amenities.



New Phase 5 Trailhead

- Three mile progressive stacked-loop mountain bike trail.
- Beginner to advance riders, hikers, runners and equestrians.



Amazing view from the top of the phase 5 trailhead

